



Weight **W**

H

Height



TARA HARMONY

Weight: 390 kg

Capacity: 2 People

Overall Dimensions LxWxH:
2750mmx1220mmx1895mm

Colors :

Sandstone, White, Beige, Green, Silver and
Portimao Blue.



48V LITHIUM BATTERY

MODEL:L48110

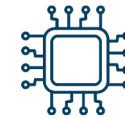


- 8 YEARS WARRANTY
- MAINTENANCE FREE
- SAFETY
- ECO FRIENDLY
- LIGHT WEIGHT

POWER



4KW MOTOR
WITH EM BRAKE



275A
AC CONTROLLER



17A
ON-BOARD CHARGER



TOP SPEED
13MPH

BODYCONFIGURATION



Golf bag holder and
Storage compartment



Caddy master cooler



Cup holder



Golf ball washer



Sand bottle



Storage compartment
with golf ball & tee holder



Storage compartment



Adjustable steering
column



Control switches

BODYCONFIGURATION



Comfort grip steering wheel with scorecard holder



USB charging port



8" iron wheel
18/8.5-8 tire



Caddy Stand