



Weight

W

H

Height



# TARA HARMONY

Weight: 390 kg

Capacity: 2 People

Overall Dimensions LxWxH:  
2750mmx1220mmx1895mm

Colors :

Sandstone, White, Beige, Green, Silver and  
Portimao Blue.

# 48V LITHIUM BATTERY

MODEL: L48110

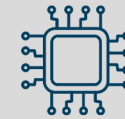


- 8 YEARS WARRANTY
- MAINTENANCE FREE
- SAFETY
- ECO FRIENDLY
- LIGHT WEIGHT

## POWER



4KW MOTOR  
WITH EM BRAKE



275A  
AC CONTROLLER



17A  
ON-BOARD CHARGER



TOP SPEED  
13MPH

# BODY CONFIGURATION



Golf bag holder and  
Storage compartment



Caddy master cooler



Cup holder



Golf ball washer



Sand bottle



Storage compartment  
with golf ball & tee holder



Storage compartment



Adjustable steering  
column



Control switches

# BODY CONFIGURATION



Comfort grip steering wheel with scorecard holder



USB charging port



8" iron wheel  
18/8.5-8 tire



Caddy Stand